

RIVA

The BIASI RIVA Boiler



Wall Mounted Gas Boiler

Output Modulates from 37,000 to 101,000 BTU/HR

Versatile Venting: Concentric and Seperate Venting

Integrated Electronic Control with LED Codes for Easy Diagnostics

DHW Flatplate Combi Available

Suitable for Baseboard Heating

QHT
INCORPORATED
The New Style of Warmth



The BIASI RIVA is a traditional design , wall mounted, standard efficiency boiler. It is perfectly suited for traditional baseboard heating systems.

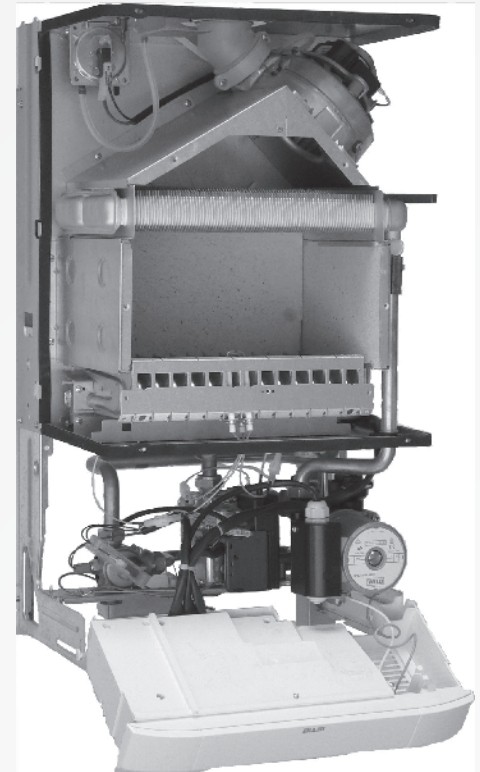
The RIVA is available in two models:

The CR provides “on demand” space heat, only firing when there is a call for heat. The boiler modulates the gas valve to perfectly match the heating or domestic load of the building.

The FP Combi supplies space heat as well as DHW (up to 4.5 GPM) from an instantaneous, flat plate DHW heat exchanger. Both models are supplied with pre-wired and piped components operated by an integrated controller with optional outdoor reset.

RIVA’s venting options allow the boiler to be vented easily in most buildings. It’s petite size will accommodate installations in confined locations. Built in system components, such as circulator and safety controls, provide easy installation.

The BIASI RIVA provides efficiency along with safety, simplicity and reliability for your home.



Technical Advantages

- Natural Gas or Propane Compatible
- Gas valve modulation
- Self contained: all parts internalized
- Electronic spark ignition
- Versatile venting options: Concentric or Roof venting available.
- Built-in outdoor reset control provided
- Circulator and Air Purger Installed
- Expansion Tank Installed

Safety Features

- Frost protection system
- Self diagnostic control system
- Safety flow switch to prevent thermal shock in the event of low/no water in the heating system
- Internal manual reset high limit control
- Blocked flue pressure switch
- Circulator protection if the boiler is idle for 24 hours

Warranty

- 2 years parts
- 10 years on the primary heat exchanger

Model	Gas Input (BTU/HR)	Min Input (BTU/HR)	Heating Capacity (BTU/HR)	EFF (%)	DHW Output (gpm)	Width (inches)	Height (inches)	Depth (inches)	Weight (LBS)
RIVA (M130.30CR)	122.8	49,500	100,700	85	N.A.	15.7	27.7	12.8	70
RIVA FP Combi (130.30CM)	122.8	49,500	100,700	85	4.5 @ 45°F rise 3.8 @ 54°F rise 3.2 @ 63°F rise 2.8 @ 72°F rise	15.7	27.7	12.8	78.7

